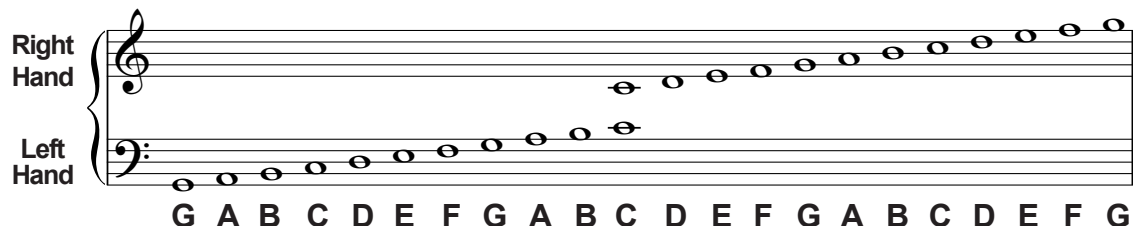
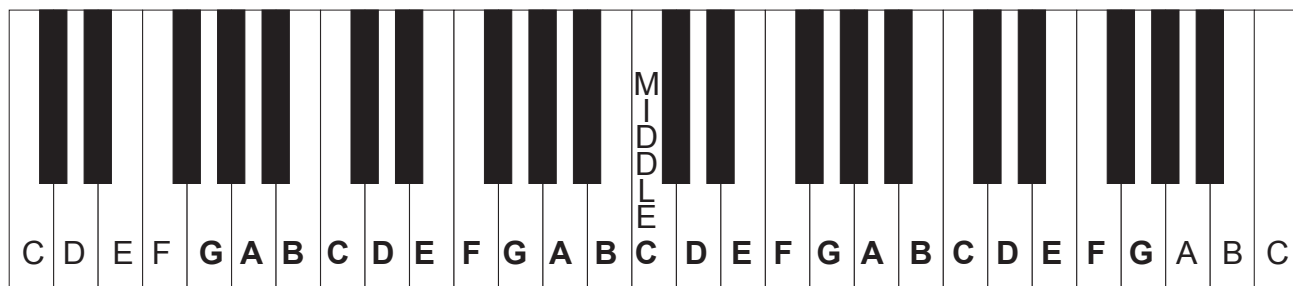


Piano/Keyboard Staff & Keys



Right Hand Line Notes

Memorize:
"Every **G**ood **B**oy **D**eserves **F**udge"

Right Hand Space Notes

Memorize:
"FACE" rhymes with "space"

Left Hand Line Notes

Memorize:
"Good **B**oys **D**eserve **F**udge **A**lways"

Left Hand Space Notes

Memorize:
"All **C**ows **E**at **G**rass"

The Musical Alphabet:

....a, b, c, d, e, f, g, **A, B, C, D, E, F, G**, a, b, c, d, e, f, g, etc....

The Musical Alphabet consists of the seven letters A, B, C, D, E, F & G; which repeats. Notice how the notes on the staff follow the musical alphabet from line to space. For example, if "A" is in a space, then "B" is on a line, "C" is in a space, "D" is on a line, etc....